

**KODIAK**  **COPPER**

TSX-V: KDK  
OTCQB: KDKCF  
FSE: 5DD1

# Discovering Tomorrow's Copper Today

## Critical Minerals Exploration in North America

October 2024

**DISCOVERY**  
GROUP

# Forward Looking Statements

This presentation contains "forward-looking statements". These forward-looking statements are made as of the date of this presentation and Kodiak Copper Corp. does not intend, and does not assume any obligation, to update these forward-looking statements. Forward-looking statements include, but are not limited to, statements with respect to the timing and amount of estimated future exploration, success of exploration activities, expenditures, permitting, and requirements for additional capital and access to data. Forward-looking statements involve known and unknown risks, uncertainties and other factors which may cause the actual results, performance or achievements of the Company to be materially different from any future results, performance or achievements expressed or implied by the forward-looking statements. Such factors include, among others, risks related to actual results of current exploration activities; changes in project parameters as plans continue to be refined; the ability to enter into joint ventures or to acquire or dispose of property interests; future prices of mineral resources; accidents, labour disputes and other risks of the mining industry; ability to obtain financing; and delays in obtaining governmental approvals or financing.

This presentation does not constitute an offer to sell or solicitation of an offer to buy any securities Kodiak Copper Corp.

Figures may not sum due to rounding. Decimal figures do not indicate added level of precision. Mt=million tonnes

Historic information reported herein was obtained from publicly available sources and industry reports. Kodiak believes this information to be from reliable sources using acceptable industry practices at the time, but the Company has not independently verified and cannot guarantee the accuracy of the historic information disclosed, therefore readers should use caution in placing reliance on such information. Management also cautions that Kodiak has not performed any exploration on the MPD Project to date. Comparisons to adjacent or similar mineral properties, deposits and mines are provided for information purposes only. Kodiak has no interest in, or rights to explore or mine any such properties and references to other deposits reported herein are not indicative of deposits or results obtained on the Company's properties.

Jeff Ward, P.Geol, is the Qualified Person as defined by NI 43-101 standards responsible for reviewing the technical content of this presentation.

# A Powerful Story



**Proven team,  
100% focused on  
shareholder returns**

**World-class  
projects in the  
right jurisdictions**



**Strong capital  
structure and  
shareholders**



**Critical mineral with a  
supply crunch looming**



# Why Invest in Kodiak Copper Now?



Focused on **effective, responsible copper exploration – critical metal for the energy transition and AI**, supply deficit looming due to the lack of new discoveries



**Management team with strong track record**, member of well-respected Discovery Group – founder and chairman Chris Taylor generated \$2bn for shareholders with sister company Great Bear



Projects in **existing mining districts in North America – low risk, low cost regions with excellent infrastructure** where mines can be permitted and built



**MPD copper-gold project** in Southern British Columbia – has all the hallmarks of a major porphyry district with the **potential to become a world-class mine**



Drilling at MPD to date proved **multiple kilometre-scale mineralized zones, including large, high-grade Gate Zone and high-grade mineralization from surface at West and Adit Zones**

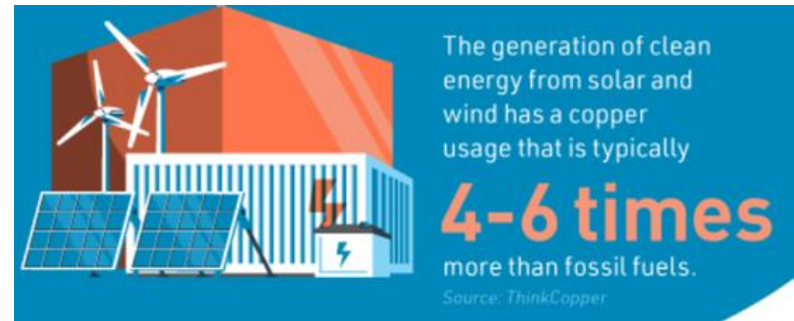
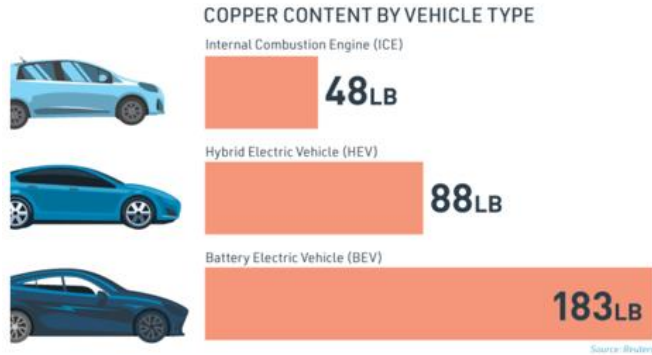


**Large, fully funded 2024 exploration program under way – steady news flow** throughout the year and into 2025



**Solid capital structure** – \$4M cash, 76M shares outstanding, Teck Resources is largest shareholder with 9%

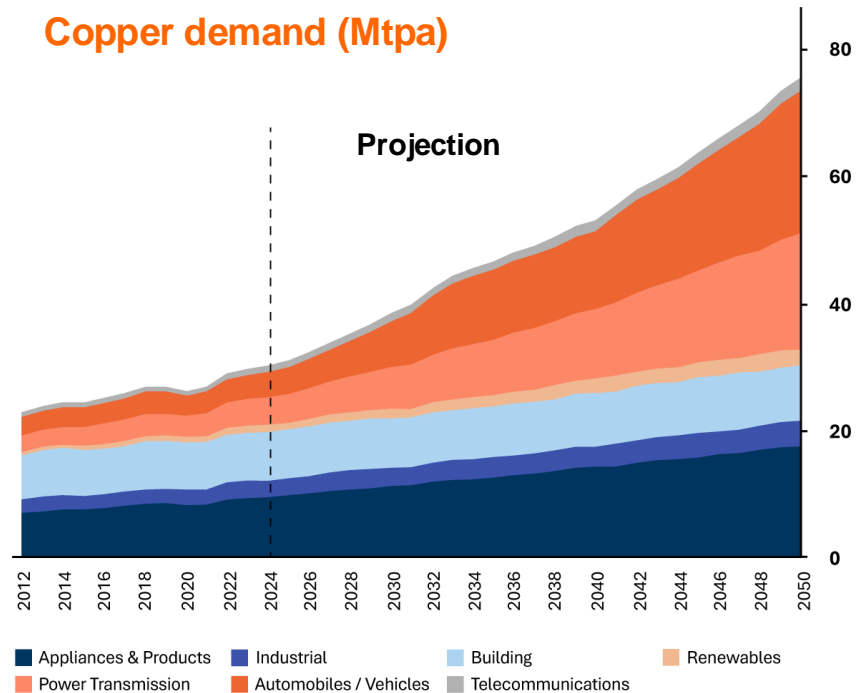
# The Energy Transition Drives Copper Demand...



*“To enable any plausible growth in emission-free energy, more copper will be required in the next 25 years than was consumed in the last 500 years.”*

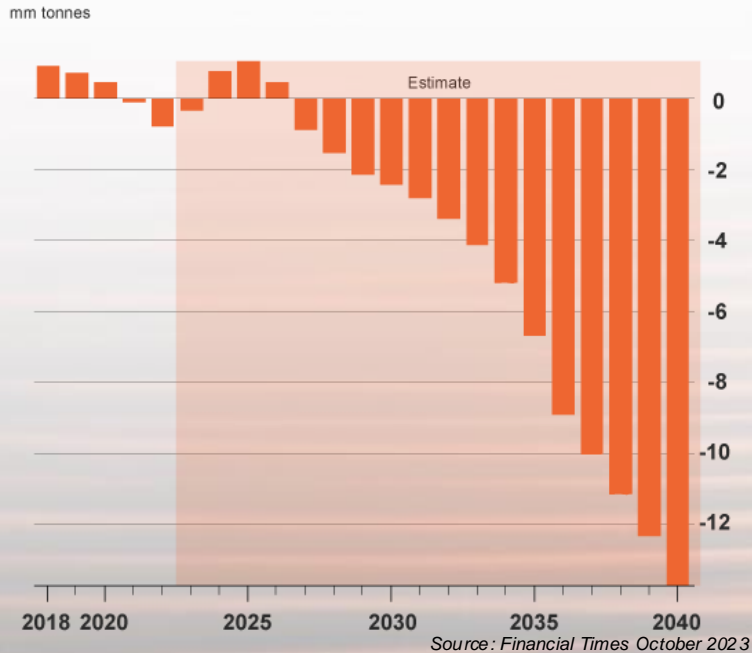
- Rio Tinto

**Copper demand (Mtpa)**

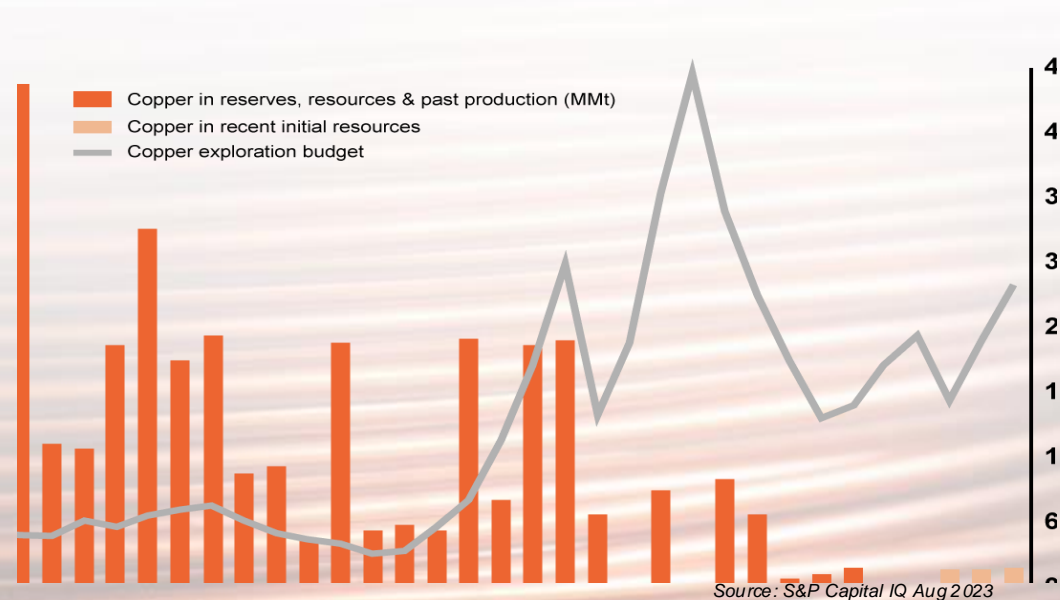


# ... BUT Copper Supply Faces a Crunch

## Copper Supply/Demand – Deficits Looming



## Copper Discovery Drought



*“Copper projects are notoriously large-scale in size, and the pipeline of new projects is the lowest in a century” - Mining.com*

# Track Record of Discovery & Shareholder Return



**Christopher Taylor M.Sc.**

**Chairman**

Mining entrepreneur and founder of Kodiak Copper. Structural and economic geologist with more than 20 years of experience with both mid-tier producer and junior exploration companies, including extensive experience in copper porphyry exploration. Founder and CEO & President of Great Bear Resources, which made a district-scale gold discovery in Canada and was taken over by Kinross Gold for \$1.8bn, a discovery success recognized industry wide.



**Claudia Tornquist M.Eng, MBA**

**President & CEO, Director**

Formerly GM at Rio Tinto working with Rio Tinto's copper operations. Also held the position of EVP Business Development for the streaming company Sandstorm Gold. Director of American Lithium & Silver One Resources, former director of Kennady Diamonds, leading the \$176m sale of the company to Mountain Province as chair of the special committee of the board.



**John Robins P.Geo**

**Advisor**

An award-winning prospector with over 35 years experience in professional geology, John is a steward of the junior mining industry and the co-founder and principal Discovery Group. His entrepreneurship has created over \$2.6 billion in M&A activity and generated over \$1 billion in direct and indirect mineral expenditures.



# Board, Advisors, Management (cont'd)

## Board Members



**Kevin Tomlinson, HBSc. MSc. - Independent Director**  
Structural geologist & investment banker, 35 years in exploration, development & financing of mining companies globally. Chairman of Bellville Gold, former chairman of Cardinal Resources



**Steven Krause, CPA, CA, ICD.D - Independent Director**  
CFO of Viva Gold Corp and former CFO of Bear Creek Mining. Former chairman of Luna Gold, where he led the \$360m merger with JDL Gold to form Trek Mining



**Chad Ulansky, B.Sc. P.Geo - Independent Director**  
Extensive exploration experience in precious and base metals that includes the original Ekati diamond discovery



**Lana Eagle, CDI.D - Independent Director**  
Indigenous relations strategist, speaker and consultant. Board Member of PDAC and Vice Chair of Geoscience BC. Member of the Whitecap Dakota First Nation

## Advisors



**Jim Paterson, B.Comm**  
Principal of Discovery Group, 25+ years of corporate experience with TSXV companies including Northern Empire, Great Bear Royalties, Kaminak Gold, ValOre Metals, K2 Gold, Gold Basin



**Carolyn Clark Loder, MLS-Indian Law, MA, BA**  
30+ years of senior professional experience in the public & private sectors in indigenous relations, mineral rights management and land management

## Management



**Jeff Ward, B.Sc., P.Geo.(BC,AB) - VP Exploration**  
Precious and base metals exploration in Canada for 35+ years with Kivalliq Energy, Corona Corp, Ashton Mining, Stornoway Diamonds



**Dave Skelton, B.Sc., P.Geo.(AB) - VP Project Management**  
35+ years of a diverse background from exploration to mine development, primarily focused on the design and implementation of exploration programs



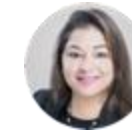
**Emily McNie, B.Sc. – Director Operations & Sustainability**  
Over 10 years experience including project management, technical and regulatory reporting, permitting, environmental compliance and community relations



**Nancy Curry, BA - VP Corporate Development**  
Over 25 years of corporate communications and development experience. Nominated twice for Best Investor Relations of a TSX-V company by IR Magazine



**Mark Laycock, CPA, CGA – CFO**  
CPA, CGA with over 15 years of accounting and finance experience in both private and public companies listed on the Canadian and U.S. stock exchanges



**Harpreet Bajaj, B.Com, MBA - Corporate Secretary**  
Over 15 years experience in corporate compliance, previously with the TSX Venture Exchange and with MNC Bank



# DISCOVERY GROUP – Access to Expertise, Contacts, Capital

## MEMBER COMPANIES



## DISCOVERY GROUP

EXPLORE • DISCOVER • DEVELOP

An alliance of public companies, individually managed and focused on the advancement of **global mineral exploration** and mining projects, with a proven track record of generating shareholder value.

### MEMBERS BENEFIT FROM:

- Integral Industry Relationships
- Increased Company Profile
- Significant Capital
- Proven Technical & Management Talent
- High-Quality Deal Flow

FOUNDED IN  
**2002**

**\$2.6+ Billion**  
IN M&A ACTIVITY

**\$1+ Billion**  
IN EQUITY RAISED

### RECENT SUCCESSES



**\$1.8B**

ACQUIRED BY **Kinross Gold** IN 2022



**\$520M**

ACQUIRED BY **Goldcorp** IN 2016



**\$200M**

ACQUIRED BY **Royal Gold** IN 2022



**\$117M**

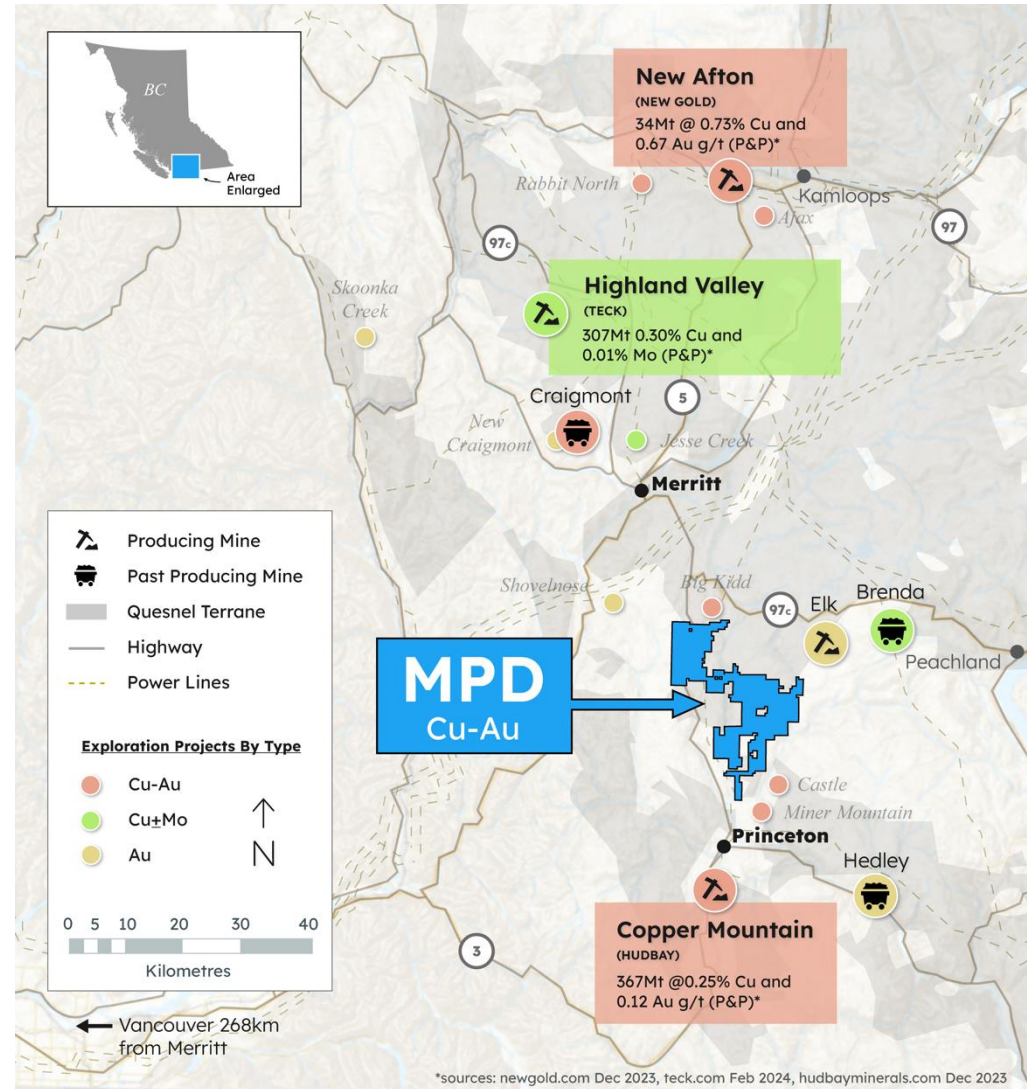
ACQUIRED BY **Coeur Mining** IN 2018

# MPD Copper-Gold Porphyry Project Is Located in World-Class Mining District

- **Large, 100% owned land package** in Southern British Columbia
- **Established mining region** with excellent infrastructure
- **Proven, mineral producing belt** in the Quesnel terrane with copper mines nearby, some with similar geology to MPD
- **Grades of neighboring copper mines:** Copper Mountain 0.25% Cu & 0.12g/t Au\*, Highland Valley 0.30% Cu & 0.01% Mo\*
- **Low-risk jurisdiction where mines are getting built**, high standards for environmental and community work



Copper Mountain Mine



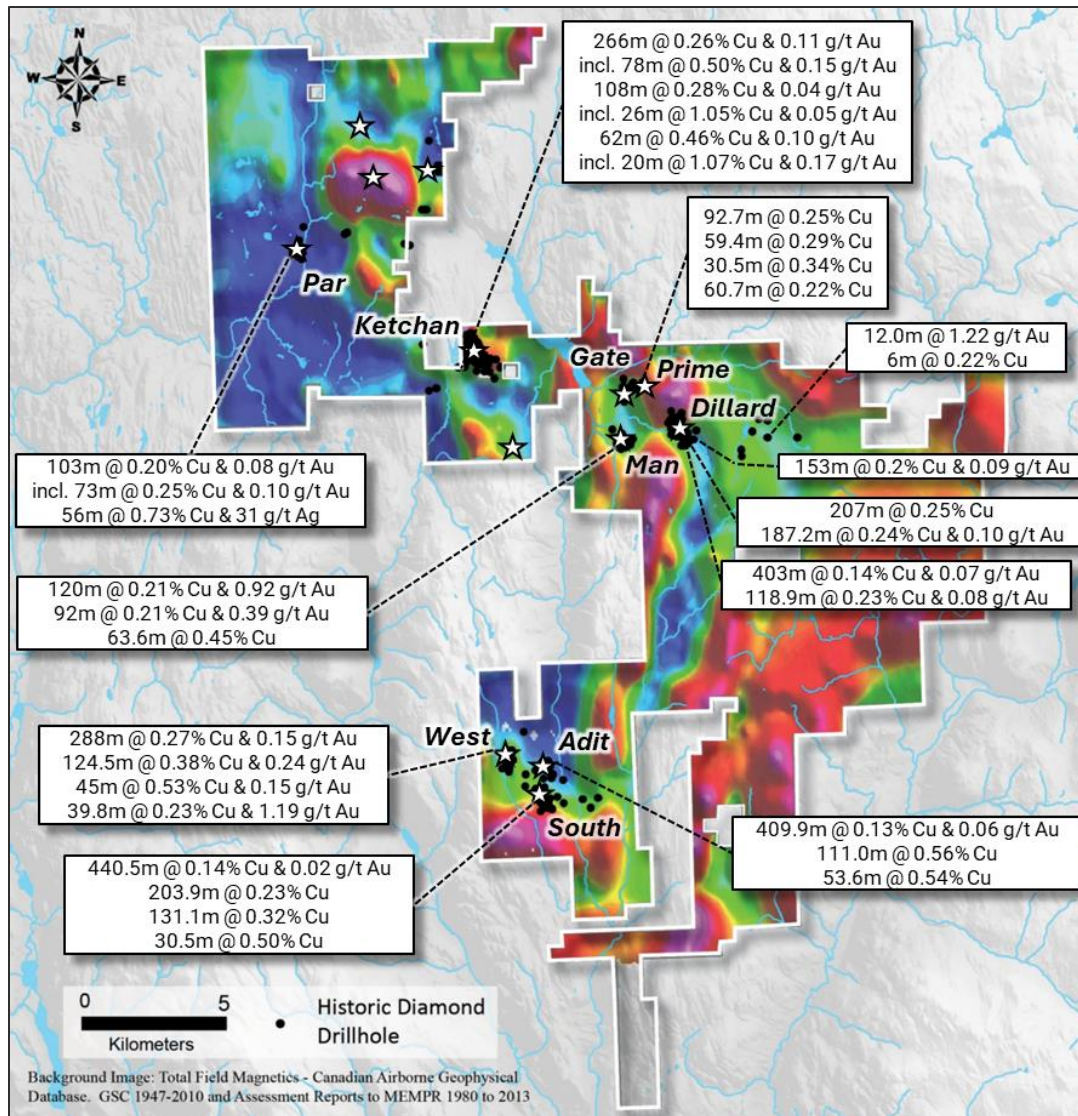
# Excellent Accessibility and Infrastructure Minimizes Exploration Cost and Enhances Future Economic Potential of MPD



- **Year-round accessibility and exploration**
- **Only minutes from existing highways - Hwy 97C & 5A**
- **Active logging area, network of existing roads on property**
- **Availability of low-cost grid power – over 98% of electricity in British Columbia is renewable\***
- **Availability of water**

*\*<https://news.gov.bc.ca/releases>*

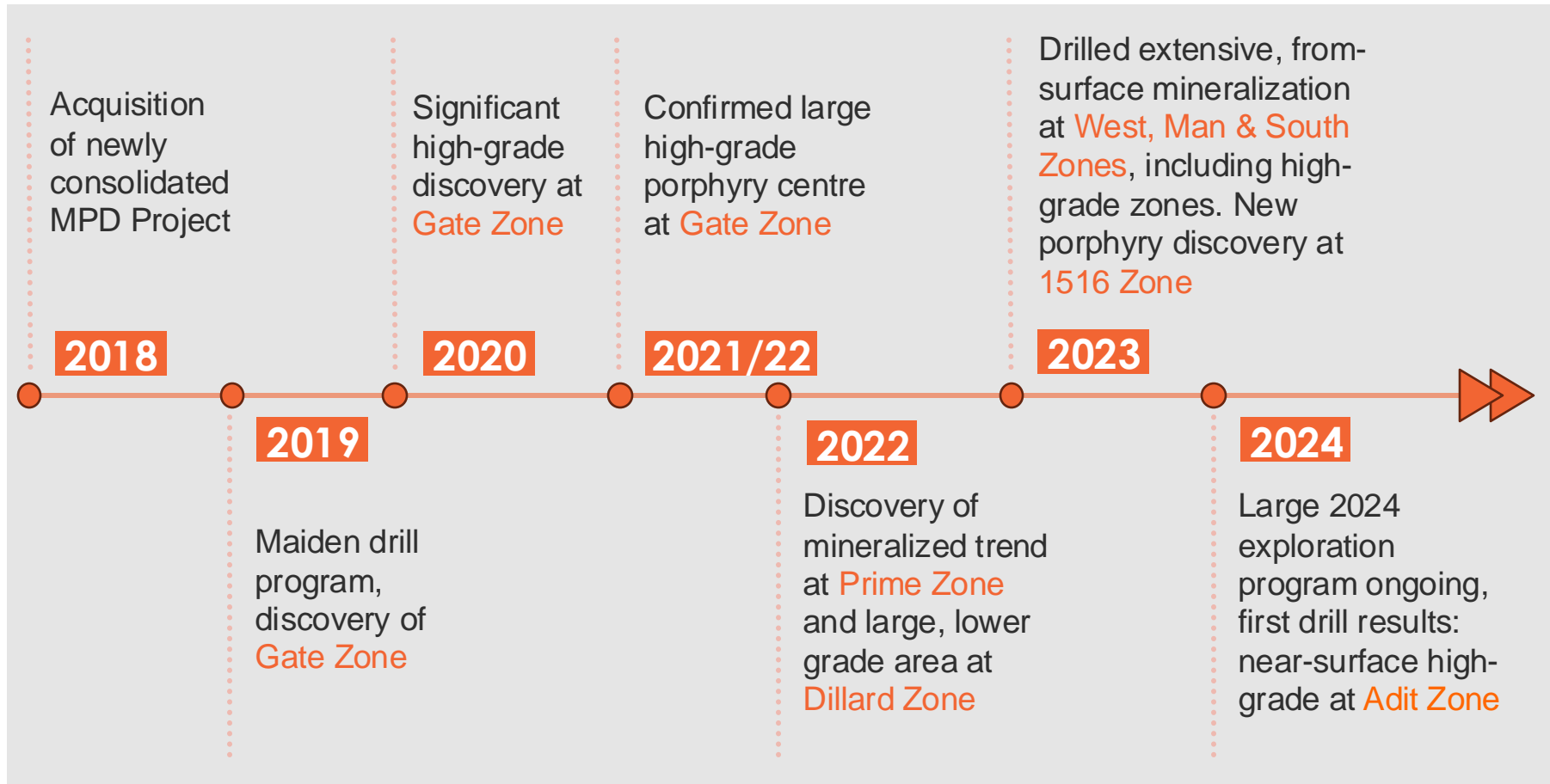
# Kodiak's Starting Point – Good Historic Drill Results Over Large Footprint; Never Explored as Single Project



- Project consolidated from multiple properties
- Large, 338 km<sup>2</sup> property, extends approx. 35km north to south
- 470 drill holes (>66,000 m) completed since the 50's by numerous operators; **always on smaller land packages**
- Numerous showings confirmed across extensive areas, **indicates potential for large copper-gold porphyry district**
- Mineralization from surface, **historic drill holes rarely tested below 200m vertical depth**
- **Discovery potential across entire MPD property**

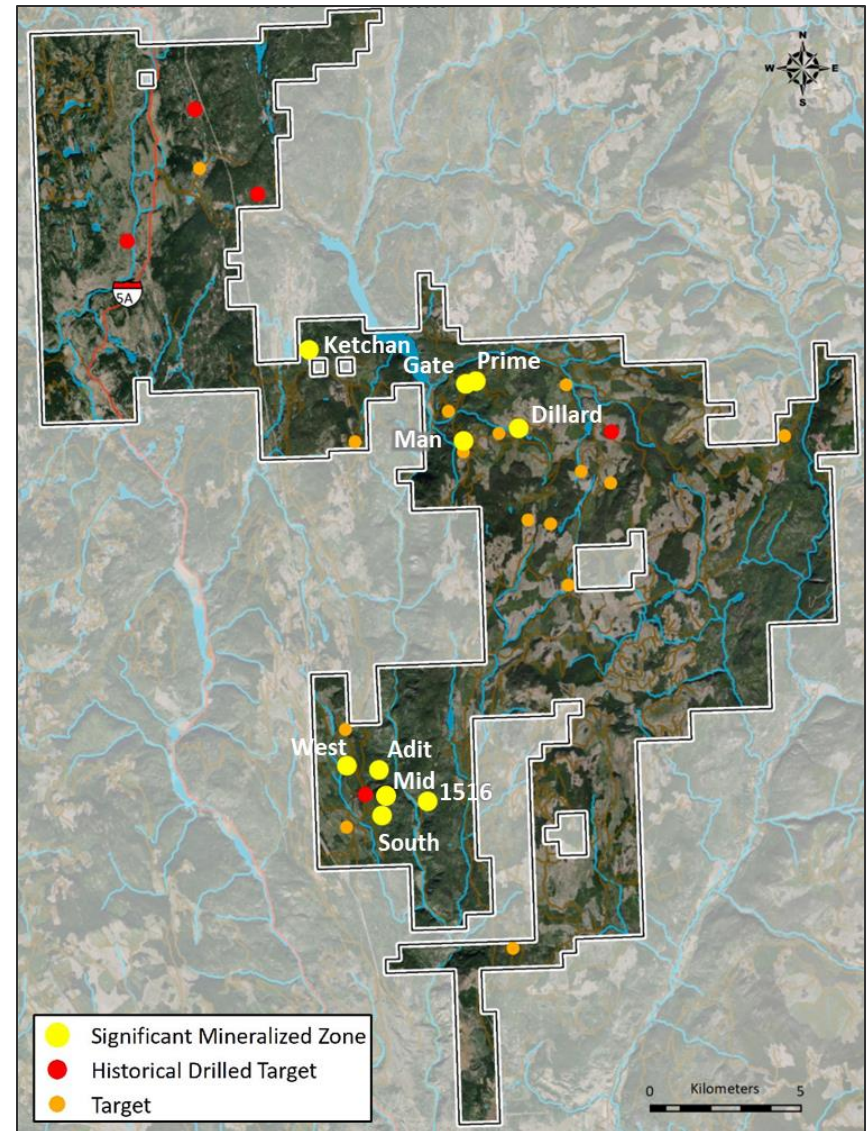
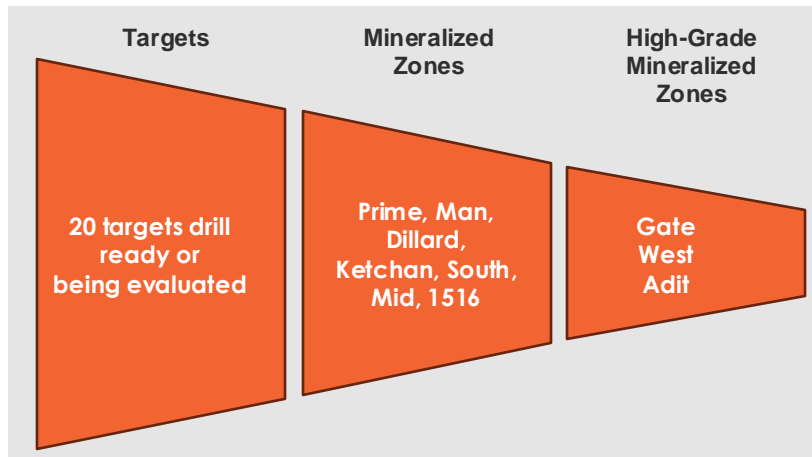
# Kodiak Systematically Advances MPD to Unlock its Potential to Become a World-Class Copper-Gold Mine

With approx. 85,000 metres of drilling to date Kodiak has confirmed multiple large areas of mineralization and significant high-grade zones, demonstrating the scale and grade of MPD

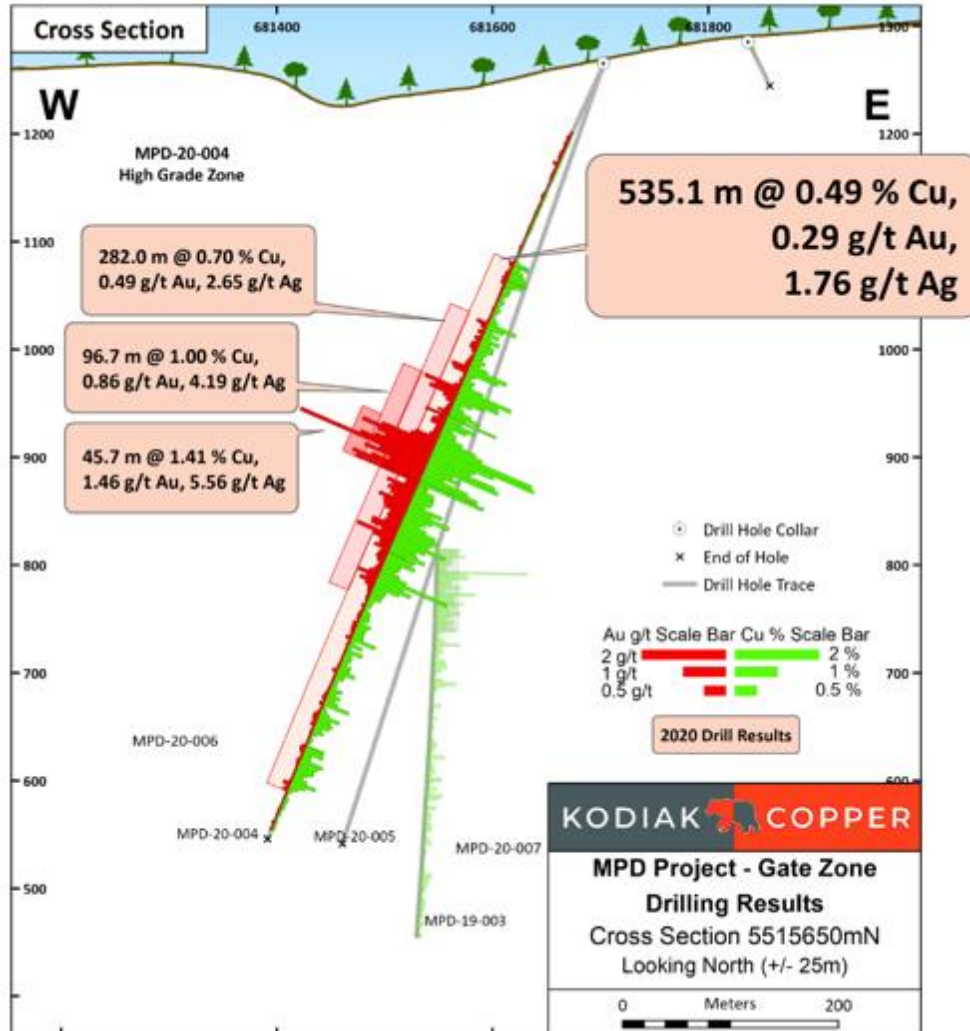


# MPD Project Is Now a Large Porphyry District with Multiple Kilometre-Scale Mineralized Zones Across the Property

- Kodiak and historic drilling has confirmed **10 substantial zones of copper-gold mineralization**: Gate, Prime, Man, Dillard, South, West, Mid, 1516, Adit & Ketchan
- **Significant high-grade mineralization** at Gate, West, Adit
- **Mineralization from surface** at multiple zones and can exceed 900m depth
- **20 additional target areas on property** – significant potential for more discoveries



# Transformative Discovery of High-Grade Gate Zone in 2020; Teck Becomes Largest Shareholder

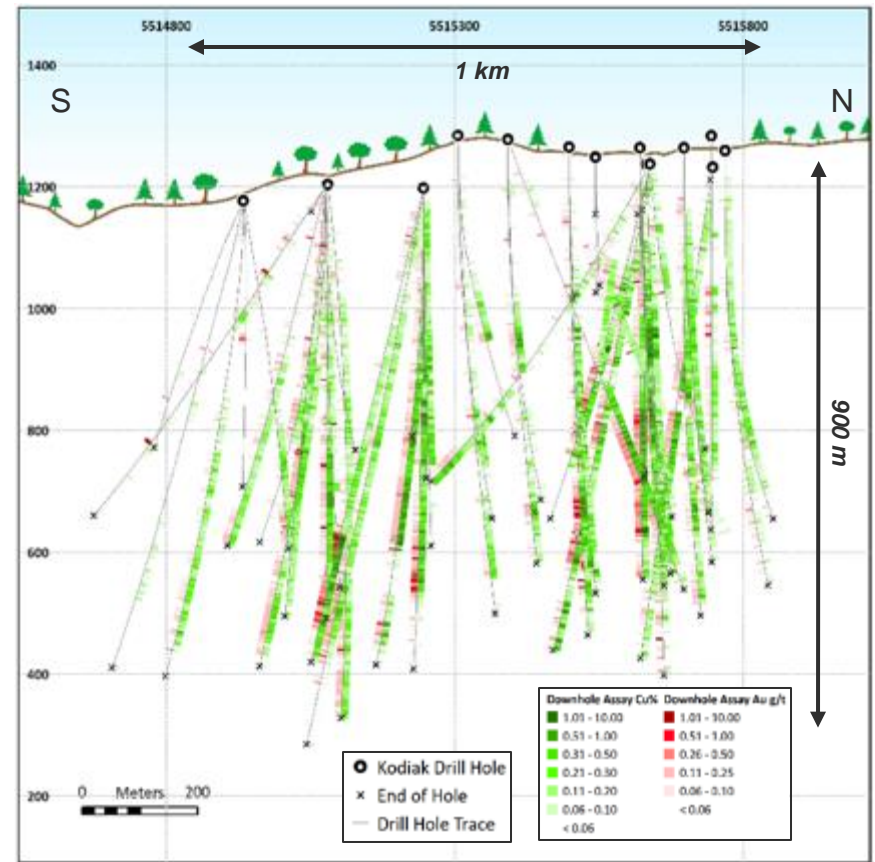
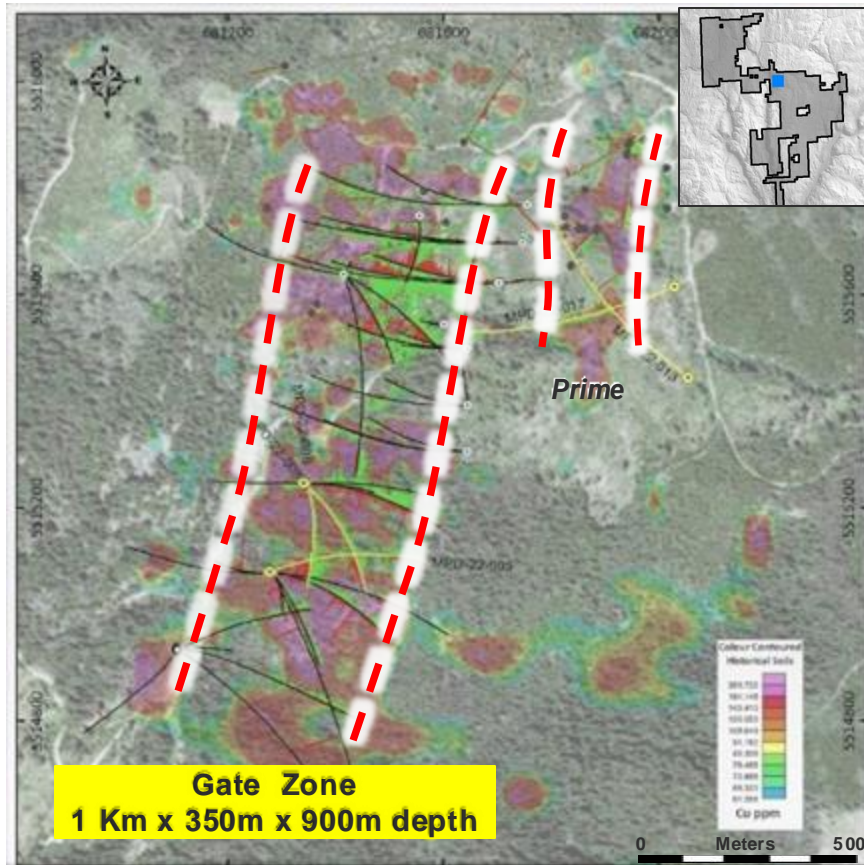


- **Discovery of significant high-grade copper-gold zone** at Gate; mineralization over substantial intervals (700m+)
- Best drill hole: **535 m of 0.49 % Cu and 0.29 g/t Au** including **282 m of 0.70% Cu and 0.49 g/t Au** including 45.7 m of 1.41% Cu and 1.46 g/t Au\*
- **Teck Resources invests C\$8 million** for a 9.9% stake in Kodiak after high-grade discovery; further investment in 2022 & 2023



\* news release 22/10/2020

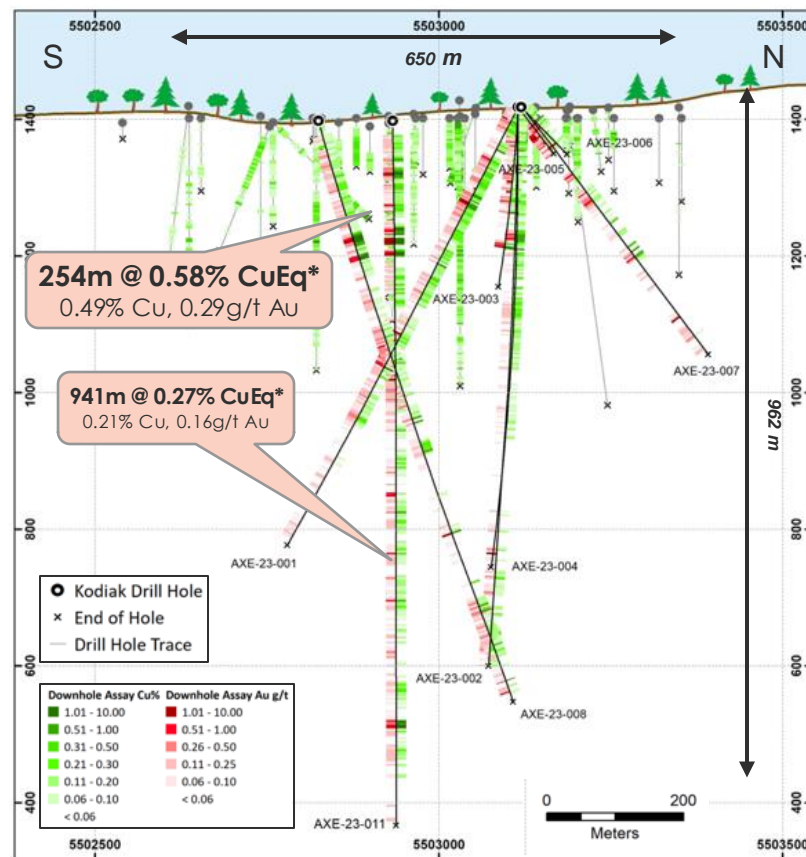
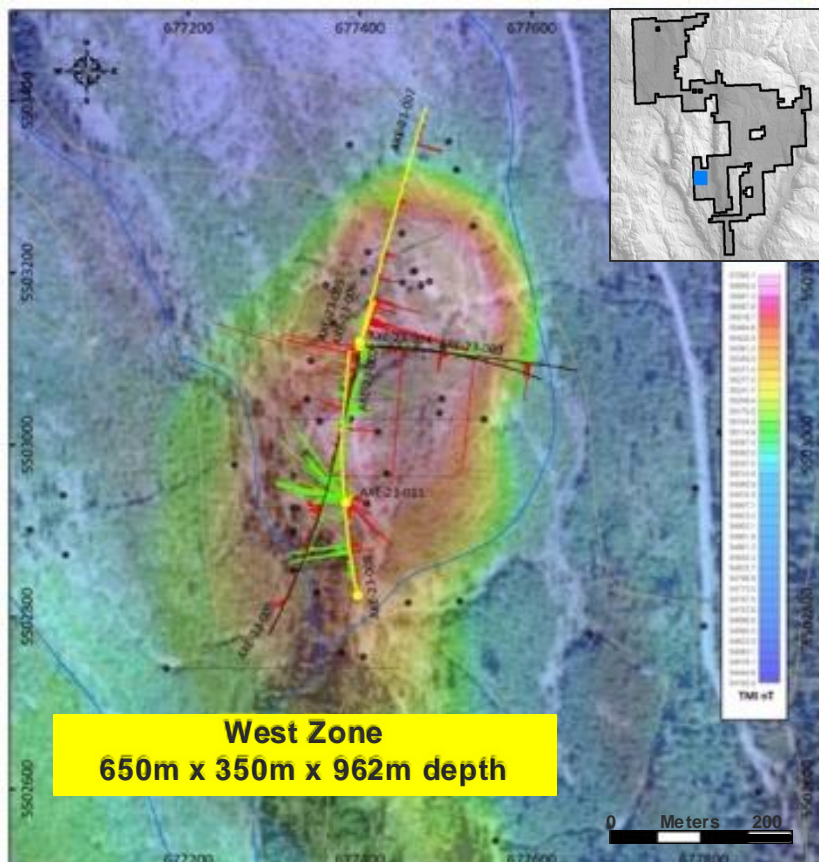
# Large Follow-up Drill Programs Totaling 48,000 Metres Successfully Prove Big, High-grade Porphyry Centre at Gate Zone



- Drilling **significantly extended the Gate Zone discovery** and shows **continuity and high grades over substantial intervals; remains open**
- **Discovery of parallel mineralized trend at Prime Zone (200m x 400m 750m depth)**



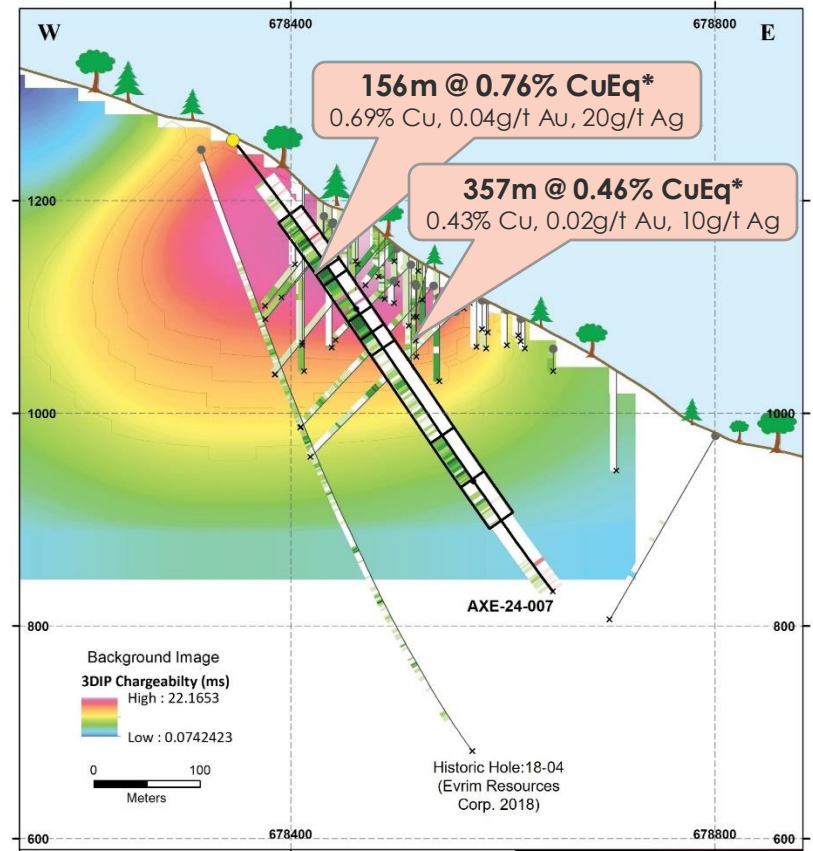
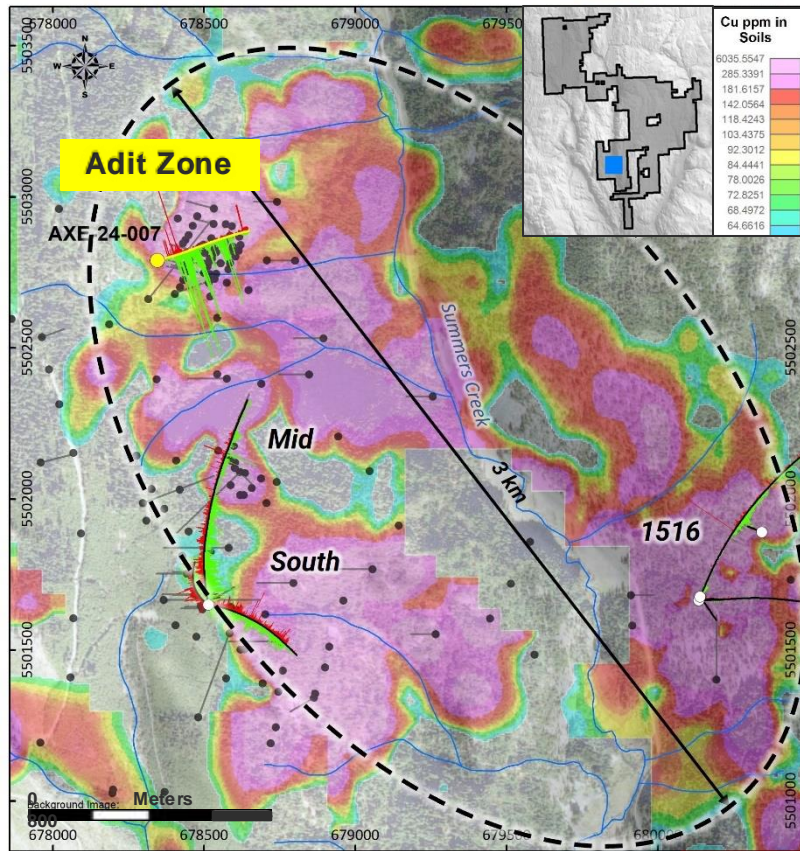
# West Zone - Discovery of High-grade Porphyry Mineralization From Surface to Substantial Depth, Open to Extension



- **Confirmed mineralization from surface and extending well below historic drilling; open to extension**
- **Best drill hole: 0.58% CuEq\* over 254m, within 0.27% CuEq\* over 941m from bedrock surface**
- **Shallow high-grade copper assaying 1.26% CuEq\* over 39m, within 0.39% CuEq\* over 198m**
- **Hydrothermal breccias with copper mineralized clasts, suggesting additional mineralization at depth**

\* news release 17/10/23

# Adit Zone – Near-Surface, High-Grade Porphyry Centre in Large System That Spans Several Mineralized Zones

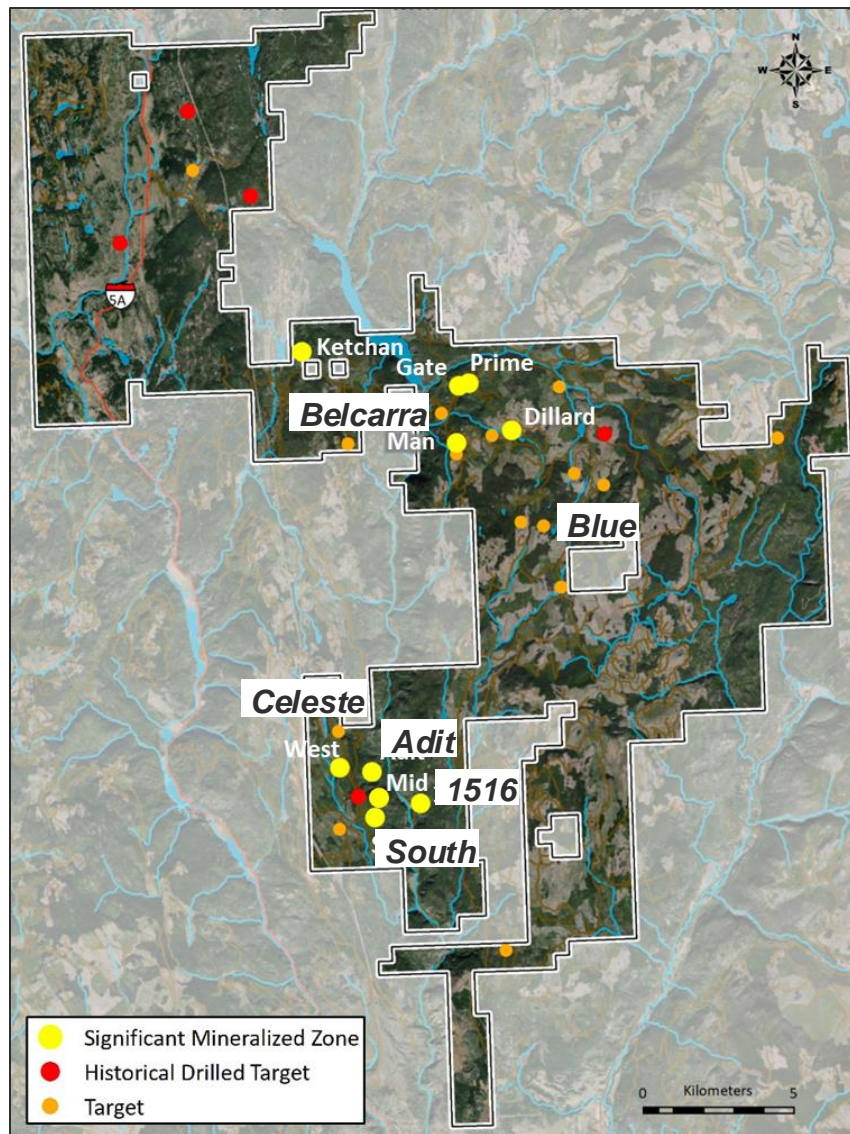


- Kodiak's drilling confirms and extends historically drilled high-grade mineralization near surface; assays from further holes pending
- Best drill hole ever drilled at Adit: 0.76% CuEq Over 156 m, within 0.46% CuEq Over 357 m
- Data suggests that the South, Mid, Adit and 1516 Zones may be part of much larger system that comprises all four zones

\* news release 10/9/24

# Substantial 2024 Exploration Program Ongoing, Results Throughout 2024 and into 2025

- **9,250m drill program on 7 targets successfully completed**, regional work ongoing
- Focus on **expanding near-surface & higher-grade mineralization**
- First results include **near-surface high-grade drill hole at Adit Zone**; majority of drill results yet to come
- **Ongoing news flow** throughout 2024 and into 2025



# ESG Plays a Key Role in Value Creation

## Environmental Stewardship



- Environmental & Wildlife Program includes migratory/nesting bird & Species at Risk surveys, invasive species surveys and wildlife observations
- Water protection measures and baseline water quality sampling and flow rate measurements in work areas
- Progressive reclamation of new work sites and remediation of historic sites
- Kodiak became carbon neutral in 2022 through the purchase of carbon offsets and has committed to decreasing its carbon emissions

## Social Engagement



- Kodiak engages directly with Indigenous Peoples to share information, ensure transparency and build relationships
- Heritage surveys are conducted by local First Nations at all proposed work sites prior to any ground disturbance
- Employment and business opportunities, local sourcing of supplies, services and staff
- The Company's health and safety management program reflects industry best practices

## Governance Best Practices

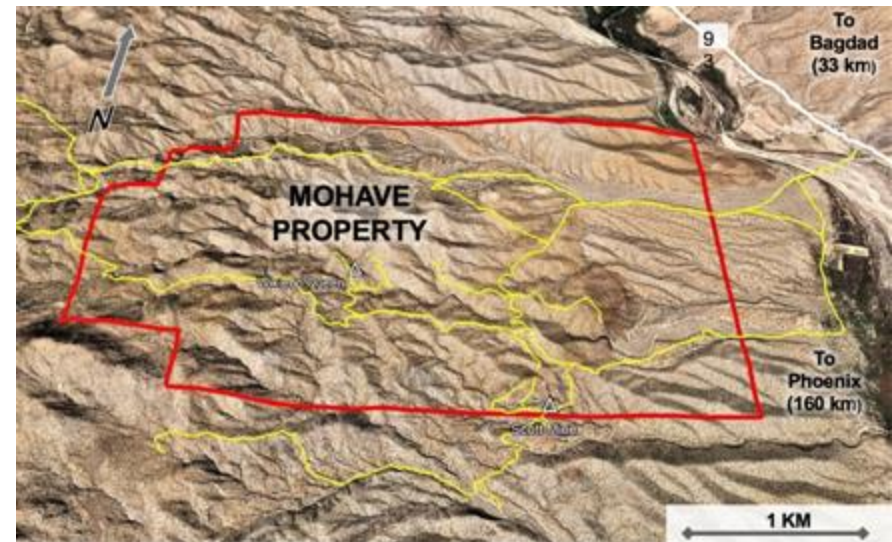


- Corporate policies and board committee mandates to promote the highest moral, legal and ethical standards and conduct within Kodiak
- Governance structures ensure accountability, responsibility, compliance with applicable laws and regulations, and ethical business practices



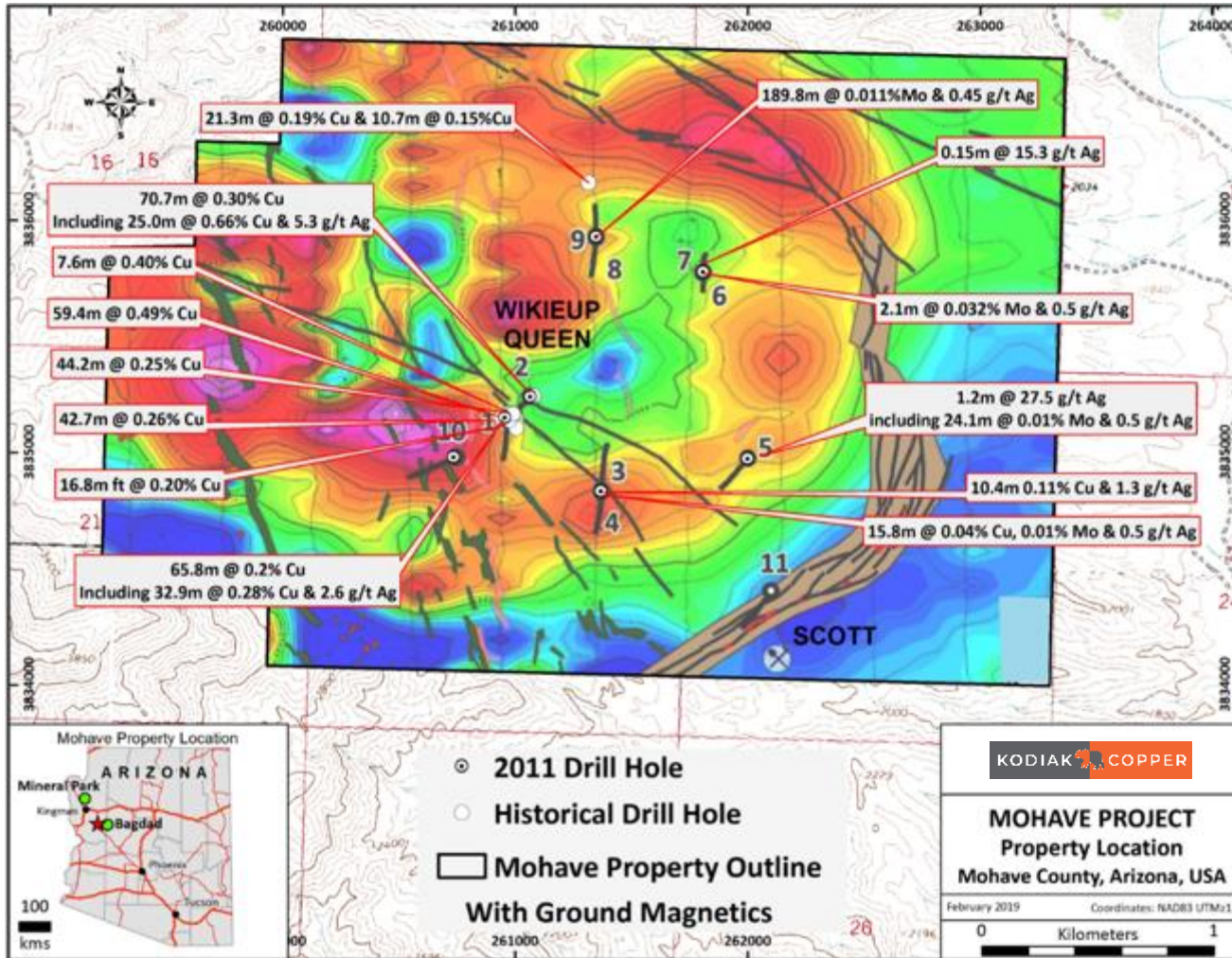
Digbee ESG™

# Mohave – Situated in Prolific Arizona Mining District, Similarities to Bagdad Mine



- Copper-molybdenum-silver porphyry project **with sizeable footprint**
- **10km<sup>2</sup>** land package in Mohave County, Arizona
- 33km west of **Freeport's Bagdad mine**; **geologically and structurally similar**
- **Road Access, Infrastructure, and Year-Round Exploration**

# Mohave – Immediate Exploration Upside, Slated for Drilling



- Drilling in 1960's/70's identified **porphyry mineralization** in 15 shallow RC holes
- **Very little recent drilling** (11 holes in 2011) - historically defined targets, geophysical and geochemical anomalies remain untested
- Magnetics define **sizeable donut-type feature**, characteristic of porphyry deposits
- **Extensive rock and soil mineralization over large area** (2.5 x 2.5 km) with coincident IP anomaly
- Maiden drill program planned

# Kodiak Copper Corp.

(as of October 1<sup>st</sup>, 2024, all C\$)

Share Price	\$0.44
Market Cap	\$33 M
Shares Outstanding	75.9 M
Options (avg. exercise price \$0.95)	5.6 M
Warrants (exercise price \$0.90)	7.4M
Fully Diluted Shares	88.9 M
Cash Position	\$4 M

## KDK Ownership

Insiders & Management	7.6%
Teck Resources	9.0%
Institutional/Family Office	40%

## Analyst Coverage

Cormark Securities - Stefan Ioannou





Scan for more  
information

# Contact Information

---

1020 - 800 West Pender  
Street, Vancouver, BC,  
V6C 2V6

Phone: +1 604 646 8362

Email: [IR@kodiakcoppercorp.com](mailto:IR@kodiakcoppercorp.com)

[www.kodiakcoppercorp.com](http://www.kodiakcoppercorp.com)