



Fact Sheet | Q2 2024

A Generational Scale Asset in a Tier-1 Jurisdiction

## THE TROILUS GOLD – COPPER PROJECT



### VALUE PROPOSITION:



#### Favourable Mining Jurisdiction

Quebec ranked #5 globally by the Fraser Institute in 2023



#### ESG Leadership

ECOLOGO certified & UNGC member; Aiming for carbon-neutral operation



#### Robust Mineral Resource

11.21 Moz AuEq (Ind.), 1.80 Moz AuEq (Inf.)\*; Among the largest undeveloped Au-Cu deposits in N.A.



#### Quality Brownfield Site

Past-producing mine 1996-2010; US\$500M of inherited infrastructure



#### 2024 Feasibility Study:

One of Canada's largest future gold-copper operations

**22-year**

Mine Life

**303,000 oz**

Avg. Annual Production (LOM)

AuEq

**135.4 Mlbs**

Avg. Annual Production (LOM)

CuEq

**\$2.2B**

Cumulative After-Tax FCF

**536,400 oz**

Peak Annual Production (Yr. 7)

AuEq

**74,900 WMT**

Avg. LOM annual production

CuEq

\*See AuEq disclosure at [www.troilusgold.com](http://www.troilusgold.com); AuEq production assumed a 92% recovery rate for all metals; CuEq recovered metal assumes a 92% recovery rate for all metals.

#### SHARE STRUCTURE

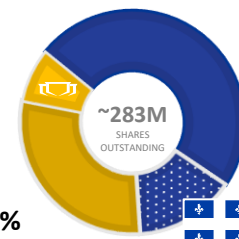
Shares Outstanding	~283M
Warrants	~8.7M
Options	Nil
RSU's	~15.5M
52-week high/low	\$0.31-\$0.85
Market Capitalization (May 27 <sup>th</sup> , '24)	~C\$111M
Cash & Marketable Securities* (May 10, '24)	~C\$13.5M

#### ANALYST COVERAGE

Richard Gray *Cormark*  
 Jacques Wortman *Laurentian*  
 Pierre Vaillancourt *Haywood*  
 Timothy Lee *Red Cloud*  
 Brandon Gaspar *Sprott Capital*  
 Paul O'Brien *Velocity Trade*

#### SHARE OWNERSHIP

~8%  
Management & Insiders



~30%  
Retail & Other

~65%  
Institutional (+50 Global Funds)

OF WHICH  
~15% ARE  
QUEBEC-BASED

\*To the best of Troilus' knowledge

# FEASIBILITY STUDY OVERVIEW

## PRODUCTION

<b>Mine Life</b>	<b>22 years</b>		
<b>Daily Mill Throughput</b>	<b>50,000 tpd</b>		
<b>Annual Mill Throughput</b>	<b>18.3Mt/year</b>		
<b>Avg. Annual Metal Production (Payable)</b>	<b>Gold</b>	<b>Copper</b>	<b>Silver</b>
	(koz)	(Mlbs)	(koz)
<b>Years 1-5</b>	256.2	16.1	475.2
<b>Years 6-22</b>	241.2	17.7	438.3
<b>Life of Mine</b>	<b>244.6</b>	<b>17.3</b>	<b>446.4</b>
<b>Proven &amp; Probable Reserves</b>	<b>380 Mt containing 7.26 Moz AuEq</b> (6.02 Moz Au, 484 Mlbs Cu, 12.2 Moz Ag)		
<b>Proven &amp; Probable Average Grades</b>	<b>0.59 g/t AuEq</b> (0.49 g/t Au, 0.058% Cu, 1.0 g/t Ag)		
<b>Strip Ratio</b>	<b>3.1:1</b>		
<b>Avg. LOM Gold/Copper/Silver Recoveries</b>	<b>92.7% / 91.8% / 91.9%</b>		

## ECONOMICS

### Base Case

(Au: \$1,975/oz; Cu: \$4.05/lb; Ag: \$23/oz)

<b>After-tax NPV<sub>5%</sub></b>	<b>\$884 million</b>
<b>After-tax IRR</b>	<b>14%</b>
<b>Payback</b>	<b>5.7 years</b>

### April 2024 avg. Case

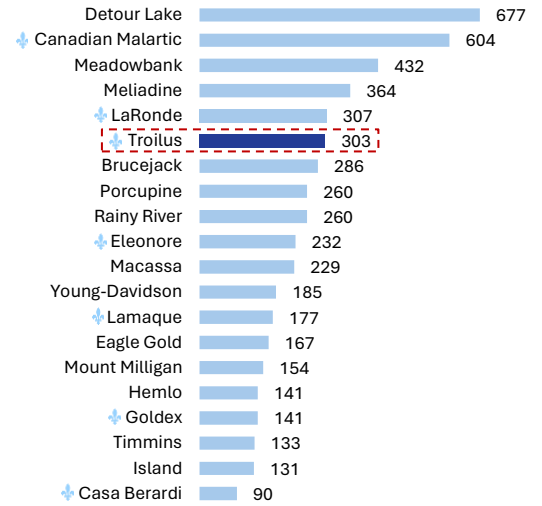
(Au: \$2,332/oz; Cu: \$4.30/lb; Ag: \$27.50/oz)

<b>After-tax NPV<sub>5%</sub></b>	<b>\$1,553 million</b>
<b>After-tax IRR</b>	<b>19.5%</b>
<b>Payback</b>	<b>4.7 years</b>

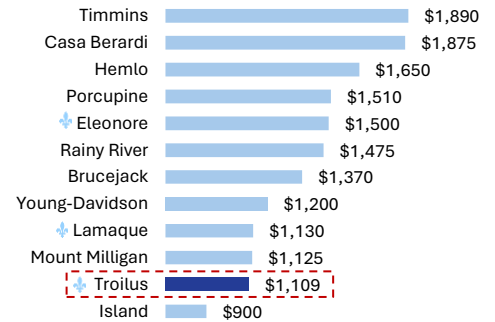
## COST METRICS

<b>Initial Capital Expenditure</b>	<b>\$1,074 million</b>
<b>Sustaining Capital Expenditure</b>	<b>\$276.6 million</b>
<b>All-in-sustaining-cost (life-of-mine)<sup>1</sup></b>	<b>\$1,109/oz</b>

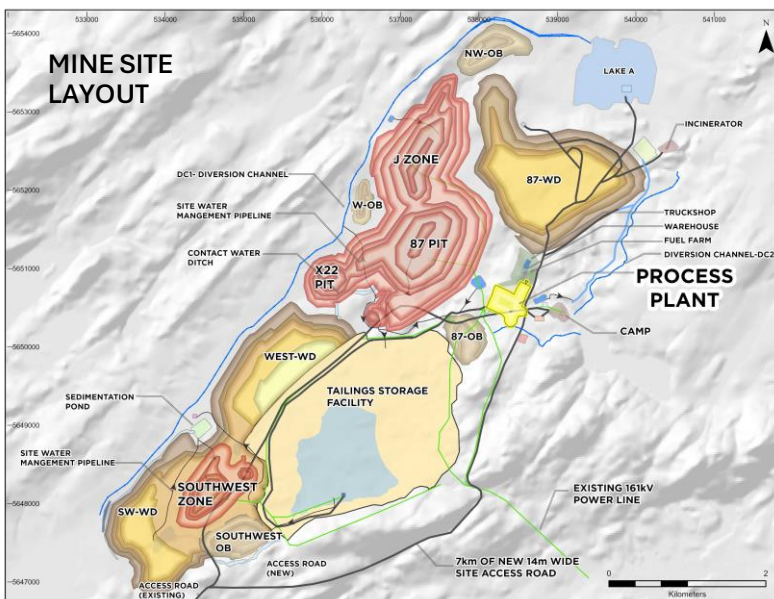
## 6<sup>TH</sup> IN ANNUAL GOLD PRODUCTION (Koz)



## 2<sup>ND</sup> LOWEST AISC IN CANADA (US\$/oz)



Source: Company disclosures. Based on '24 management guidance. Some companies do not provide AISC on an asset level. Troilus metrics based on May 2024 FS results on an AuEq basis.



## INFRASTRUCTURE: +US\$500M OF INHERITED VALUE



## Qualified Person

This fact sheet reflects the technical information presented in the May 14, 2024, press release. Nicolas Guest, P. Geo., Exploration Manager at Troilus Gold, and Kyle Frank, P. Geo., VP Exploration at Troilus Gold, both of whom are Qualified Persons as defined by NI 43-101, have reviewed and approved the written disclosure in this presentation.

## Board of Directors

Diane Lai, Chairperson	Hon. Pierre Pettigrew
Brigitte Berneche	Dr. Eric Lamontagne
Thomas Olesinski	Justin Reid

## Senior Management

Justin Reid, CEO, Director	Brianna Davies, Sr. VP Legal & Corp. Secretary
Susanna Milne, CFO	Catherine Stretch, VP Corporate Affairs
Ian Pritchard, SVP Technical Services	Caroline Arseneault, VP Corp. Communications
Kyle Frank, VP Exploration	Jacqueline Leroux, VP Env., Permitting & QC Operations
Daniel Bergeron, VP Special Projects	Nicolas Guest, Exploration Manager

## Contact Us

715 Sq. Victoria, Suite 705, MtL, QC H2Y 2H7  
+1 (647) 276-0050 or info@troilusgold.com  
troilusgold.com

Follow Us: